



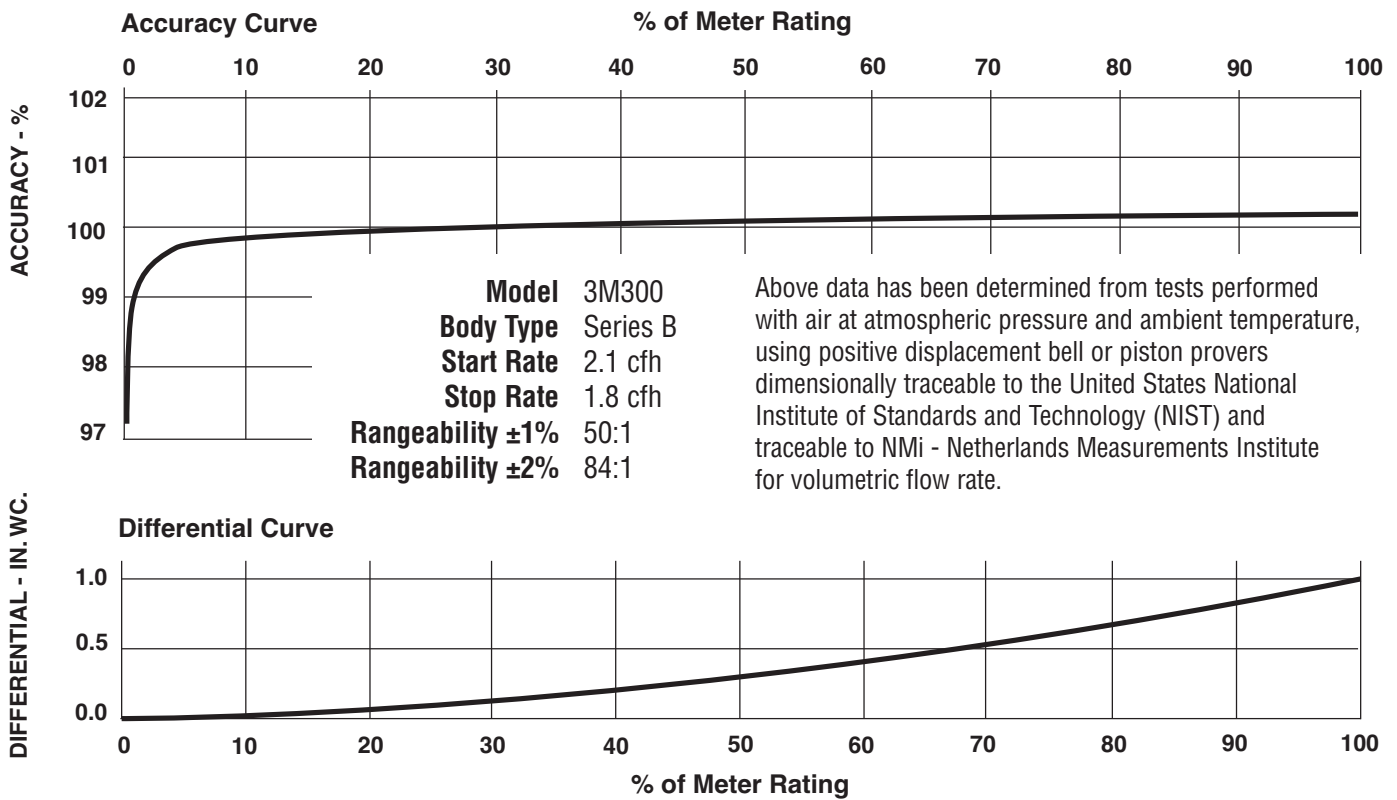
Series B3 ROOTS® Meter 3M300 High Pressure Rotary Meter

	UNITS	Imperial	UNITS	Metric
Temperature Range	deg. F	-40 to +140	deg. C	-40 to +60
Base Rating (Q Max.)	acfh	3000	m3/h	85,0
Max. Operating Pressure (MAOP)	psig	300	kPa	2065
Leak Test (125% MAOP)	psig	375	kPa	2575
Static Test (2 x MAOP)	psig	600	kPa	4130
Rangeability +/- 1%	ratio	50:1	ratio	50:1
Rangeability +/- 2%	ratio	84:1	ratio	84:1
Start Rate	cfh	2.1	m3/h	0,0595
Stop Rate	cfh	1.8	m3/h	0,0510
Flow Rate @ 0.5" w.c., Gas	cfh	2580	m3/h	73,1
Avg. Differential, 100% Flow	in. w.c.	1	mbar	2,5
Max. Pressurization Rate	psig/sec	5	kPa/sec	35
Max. Operating Speed	rpm	2000	rpm	2000
Gear Ratio	ratio	400:1	ratio	141,1764:1
Displaced Volume/Revolution	cf	0.025	m3	0,000708
Drive Rate, CD	cf/rev	10	m3/rev	0,1
Min. Odometer Reading	cf	0.2	m3	0,002
Odometer Turnover	yrs.	3.81	yrs.	1,34
Nominal Pipe Size	in.	2	mm	50,8
Flange-to-Flange	in.	6-3/4	mm	171
Flange Connection	ANSI	300#FF	ANSI	300#FF
Bolts per Flange	qty.	8	qty.	8
Bolt Size ¹	in.	5/8 - 11	in.	5/8 - 11
Flange Bolt Hole Depth	in.	15/16	mm	23,8
Bolt Torque: Lubricated/Non-Lub.	ft.-lb.	80	N-m	108
Restricting Orifice (100%)	in.	31/64	mm	12,303
Oil Capacity – Side Inlet	oz.	1.25	ml	37
Oil Capacity – Top Inlet	oz.	7.6	ml	225
Counter Version (CTR) ²				
Net Weight	lbs.	29	kg	13,2
Shipping Weight	lbs.	31	kg	14,1
Carton Size	in.	26 x 10-5/16 x 7-3/4	cm	66 x 38 x 40
Counter with Instrument Drive (CD) ²				
Net Weight	lbs.	31	kg	14,1
Shipping Weight	lbs.	34	kg	15,4
Carton Size	in.	14 x 29-3/4 x 11-1/2	cm	36 x 76 x 29

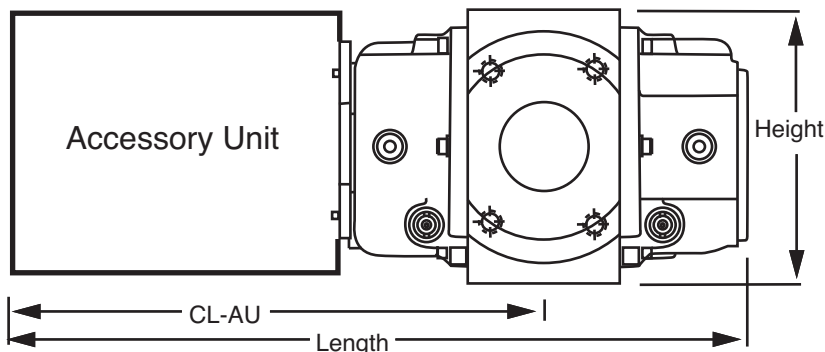
NOTES:

¹ Bolt Length varies by application.

² Weights and dimensions available for CPS upon request.



3M300 Series B3	Overall Length		Overall Height		Width (Flange/Flange)		Centerline to Accessory End (CL-AU)		Request Detailed Drawing Number
	inches	mm	inches	mm	inches	mm	inches	mm	
CTR	17-5/32	436	6-31/32	177	6-3/4	171	10-29/32	277	D054722-000
CD	20-31/32	533	6-31/32	177	6-3/4	171	14-23/32	374	D054439-000
CPW/CEX	19-1/4	489	6-31/32	177	6-3/4	171	13	331	D056121-000



To order

Specify: Meter Series, Size and Type (i.e. ROOTS® Meter Series B3 3M300 CD).
 For CD, specify Inlet (Top or Side) and ID Rotation (CW-B or CCW-A).
 For Pulsar, specify Single or Dual Connectors and Connector Type (MS Circular, Conduit or Cable Gland).
 For more specific ordering information on the electronic products, request: TS:SSP or TS:MC.
 Contact the factory for other available information, options, or special requests.

**Roots Meters & Instruments
 Dresser, Inc.**

16240 Port Northwest Drive
 Houston, Texas 77041-2645 USA
 Inside US Ph: 800.521.1114 Fax: 800.335.5224
 Outside US Ph: 832.590.2303 Fax: 832.590.2494



www.dresser.com